

PROJECT



TURING



160 CHESTERTON ROAD, CAMBRIDGE, CB4 1DA





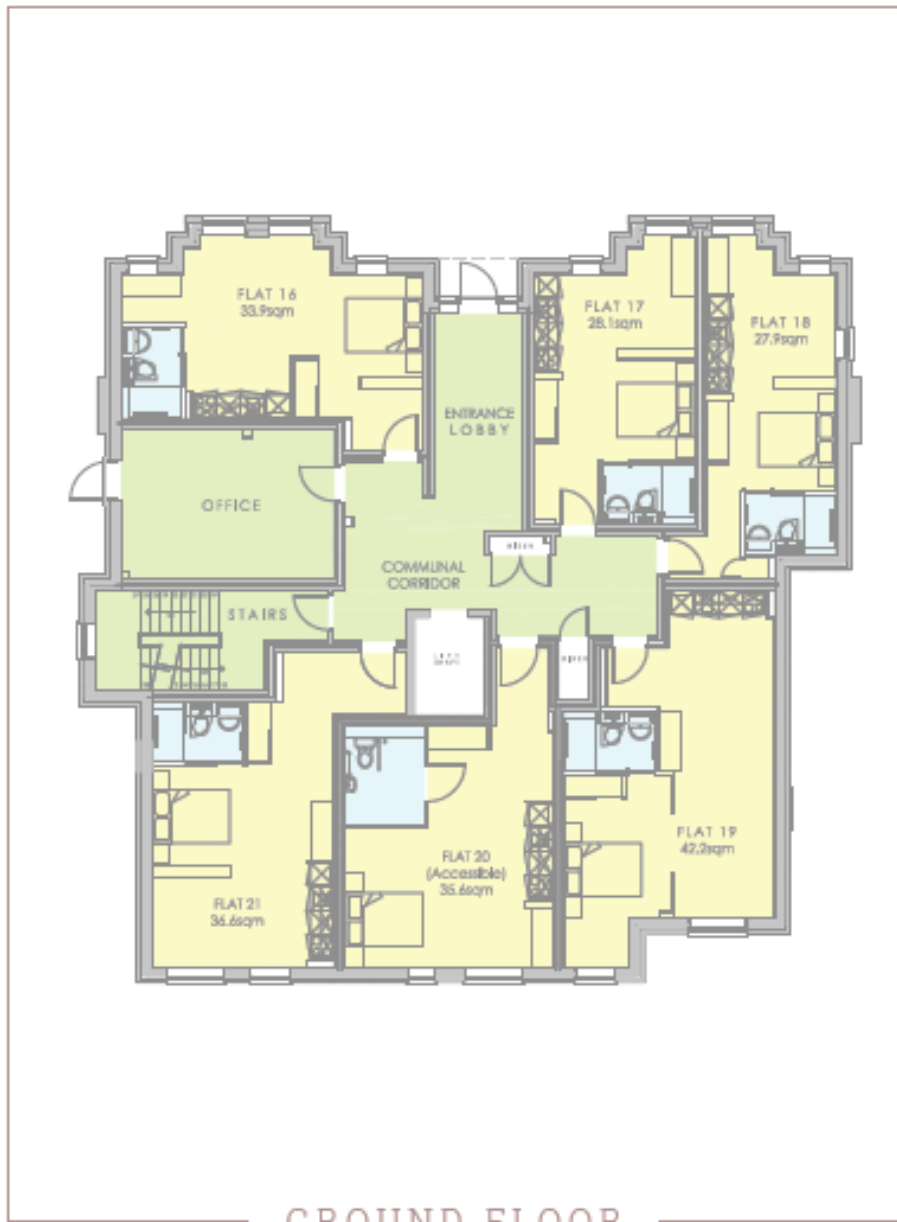
OPPORTUNITY OVERVIEW*

- 46 Units Encompassing
 - 9 Studios
 - 14 One Bedrooms
 - 23 Suites
- 5 of the 46 Units are Duplex
- Gross Internal Area 3,391.7m²
- Net Internal Area 1464.2m²
- Access to an Inner Coverage Orangery Courtyard Area
- Bike Storage Ranks will be available
- On-site Parking available including Two Disabled Spaces

* subject to planning

BUILDING A

16





CONTACTS

MRP ADVISORY GROUP LTD

11-15 High Street, Marlow
Buckinghamshire, SL7 1AU
United Kingdom
www.mrpadvisor.com



Max Thorne

Chief Executive

+44 7768 617995
max.thorne@mrpadvisor.com



Vikkie Ware

Business Manager

+44 20 7030 3237
vikkie.ware@mrpadvisor.com



Narup Chana

Senior Analyst

+44 7407 385694
narup.chana@mrpadvisor.com



Jessica Rollett

Analyst

+44 7789 466921
jessica.rollett@mrpadvisor.com

DISCLAIMER: The MRP Group for themselves and for the vendors or lessors of this property whose agents they are, give notice that- a. the particulars are set out as a general outline only for guidance and do not constitute, nor constitute part of, an offer or contract; b. all descriptions, dimensions, references to condition and necessary permissions for use and occupation, and other details are believed to be correct, but any intending purchasers, tenants or third parties should not rely on them as statements or representations of fact but satisfy themselves that they are correct by inspection or otherwise; c. no person in the employment of The MRP Group has any authority to make or give any representation or warranty whatever in relation to the property; d. Any images may be computer generated. Any photographs show only certain parts of the property as they appeared at the time they were taken.